

CARL GUSTAV SWENSSON MEMORIAL IN ŽILINA

PARK CARLA GUSTAVA SWENSSONA V ŽILINE

Authors:

Marek Sobola, Ph.D., landscape architect

MgA. Michal Janiga, sculptor

Technical documentation: Marek Sobola, Ján Janík

Location:

Park Carla Gustava Swenssona, Žilina

Žilina 2021



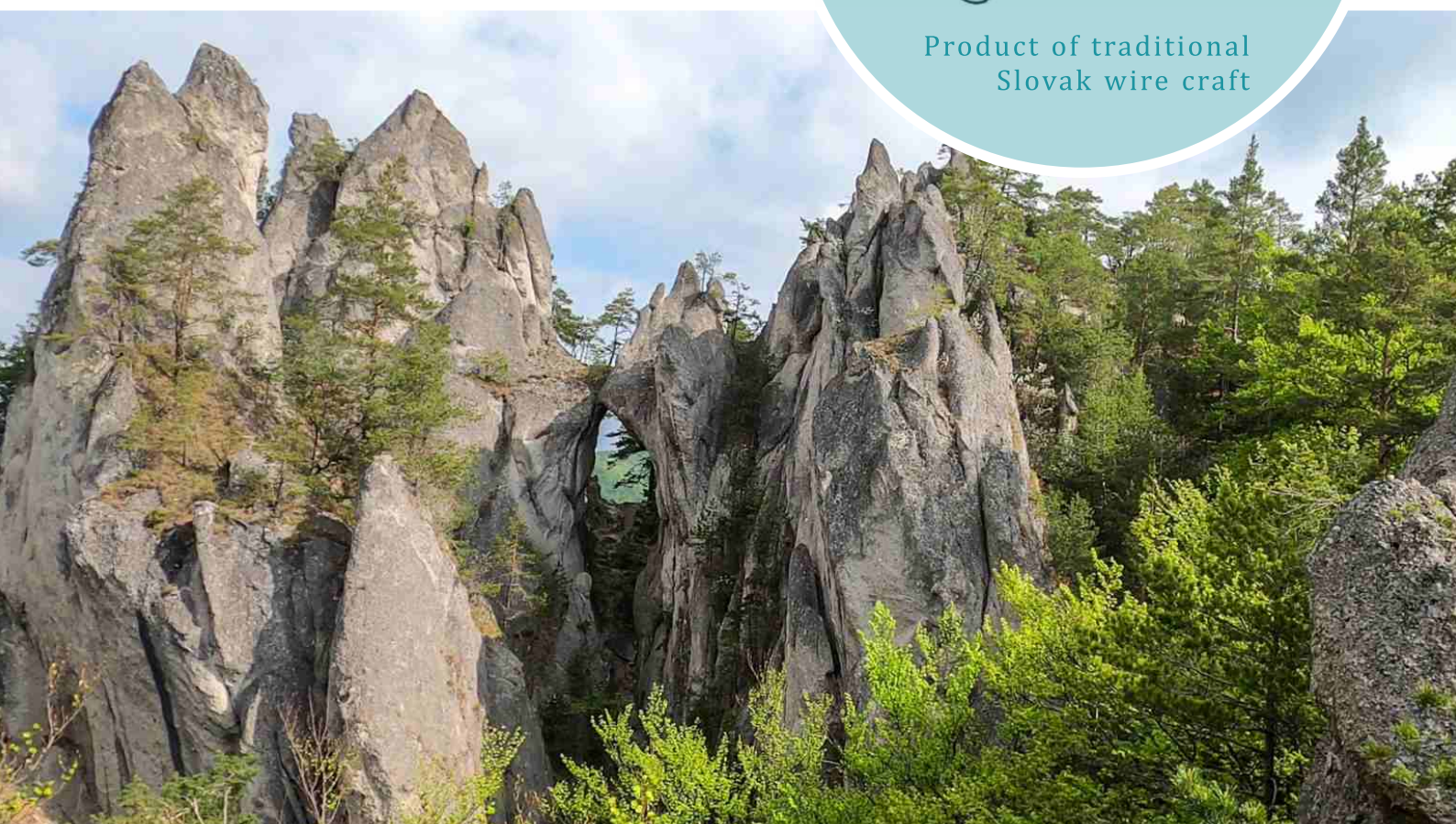


BASIC FACTS

- Original Swensson park around the former Cloth Processing Factory **was built 130 years ago**. It was the first public city park in Žilina.
- Carl Gustav Swensson Memorial will be realized in the newly created Carl Gustav Swensson Park in Žilina.
- Žilina City Council named after Swensson a small city park in 2021.
- **First park named after a Swedish citizen in Slovakia.**
- **First park named after Swensson in Europe.**
- Current Swensson Park was established as a nameless park around 1950.
- Under the park, the Všivák stream flows underground, which flows under the entire territory of the city center of Žilina.
- There are currently **25 trees** growing in the new Swensson Park, out of which 10 coniferous and 15 deciduous.
- **Park area is 3500 square meters.**
- Shape of the Swensson monument is inspired by the Gothic Gate in the Súľov Rocks, the massif near Žilina.
- Sculpture of the Swensson monument itself combines the **local historical craft and modern sculptural techniques.**
- Architecture of the monument is a synthesis of **modern art and green architecture.**



The Gothic Gate in the Súľov Rocks



Product of traditional
Slovak wire craft

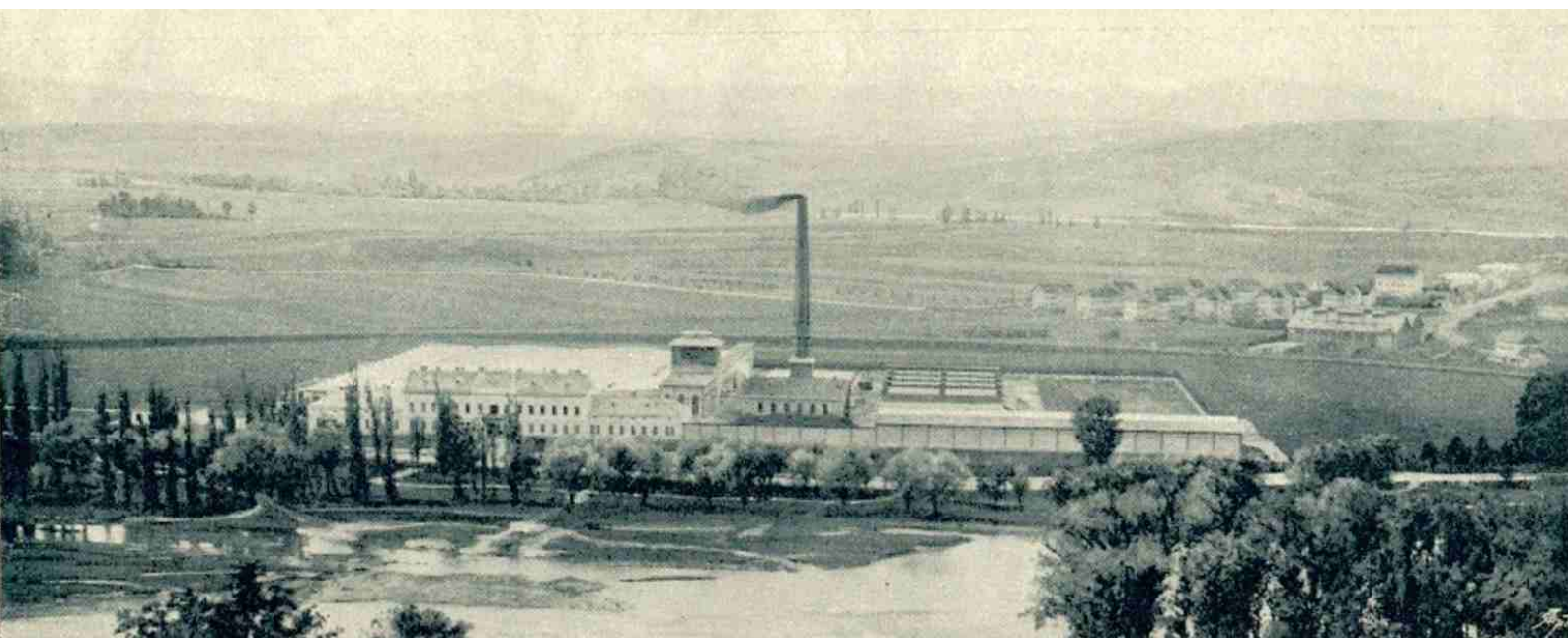


SWENSSON'S CONTRIBUTION TO EUROPEAN LANDSCAPE ARCHITECTURE

Carl Gustav Swensson (* June 15, 1861 – † April 13, 1910) was a Swedish landscape architect who worked as a professional mainly in the countries of the Austro-Hungarian Empire. He was born in Jönköping, Sweden as **Svensson** but since his emigration (in 1881 when he was 20 years old), during his time in Würzburg (Germany) and in Vienna (Austria) until his death, he used the surname **Swensson**.

Swensson has worked on important garden and landscape projects in Switzerland and in today's Austria, the Czech Republic, Poland, Slovenia, Slovakia and Croatia. He was a real Paneuropean landscape architect. In Slovakia, in 1891, he realized a landscape and garden project around the former Cloth Processing Factory, the so-called “*Súkenka*” in Slovak (in German: *Silleiner Fabriken Adolf Löw & Sohn*). He probably also built the Löw's exhibition pavilion at the Žilina Industrial Exhibition in 1903. Proof of Swensson's authorship significantly sheds light on the history of architecture in Žilina. It shows that landscape projects of European significance were also created in this area.

Unfortunately, to date, only a torso has been preserved from Swensson's original work. To this day, old solitary trees from the original park concept can be identified in the area of the former factory, which at that time was one of the most important in the city not only in terms of area, but also in the use of kind of trees. It is demonstrably also the oldest park in Žilina. In addition to exotic and at the time rare trees, Swensson also incorporated existing wild trees. The generous park area was delimited by the Košice–Bohumín Railway and the road leading to the old bridge (at present extinct) over the Váh River. In his time, Swensson was one of the productive landscape architects with excellent projects and in the context of the places of his realization he can be assessed as a Paneuropean landscape architect with international influence and significance.



A historical view of a former Cloth Processing Factory in Žilina called „*Súkenka*“



ŽILINA MEMORIAL

The nongovernmental association Servare et Manere was initiating the creation of a dignified memorial to this important Swedish and European landscape architect, to whom was also unveiled a small memorial in Bled, Slovenia, in 2000. In 2021, 160 years will have passed since his birth and also 130 years since the construction of the park near the former Cloth Processing Factory in Žilina. It is the only proven and also the only preserved work of this architect in the whole territory of the Slovak Republic. The Žilina Nomenclature Commission decided to name the nameless park in Žilina which is bordered by Kysucká and Športová streets to Carl Gustav Swensson Park (in Slovak: Park Carla Gustava Swenssona). So far, this is the only name of the park after a Swedish citizen in Slovakia and probably the first park in Europe named after Swensson. It is important to note that part of the current Swensson Park in Žilina is located on the original part and territory of the former Cloth Factory Park.

Work design concept

As it is a landscape architect, it seems ideal to plant several pieces of trees together with a suitable and corresponding sculpture. Using trees as a basic element of any park or garden is the most appropriate reminder of landscape architect. In the concept, we do not focus only on the mass of the monument itself, which will include memorial trees, but we look at the park as an architectural whole. For this reason, we propose to include in the project the entire park area. Minor horticultural interventions should take place in the park and will consist of the planting of rarer tree species. Such an enriched assortment of trees and truss will form the basis of the so-called **Exposition of woody plants in the country**. Each tree will have its own number, label and QR code, thanks to which the visitor will learn more about a specific tree. All information, including the floor plan of the entire park, the history of the place, the history of Súkenka Factory or other attractions related to Swensson will be placed on several information panels. In the park is also located the old Memorial of Žilina textile workers, which is to commemorate the *"revolutionary struggles of Žilina textile workers in 1924 and 1943"*. The author of the monument is the sculptor Jozef Čerňan. This monument (as well as the future Swensson memorial) will be assigned a QR code according to the design manual of Žilina used to mark memorial buildings and points in the city. The overall intention of the memorial site is to create a space which, in addition to the possibility of relaxation and a green zone in an otherwise more industrial area of the city, will also offer historical and botanical information. Information on the possibilities of applying green infrastructure in the urban environment will be also very important. This will create a kind of the **first miniature Žilina's city botanical garden**, where the visitor will learn information about the trees and bushes planted in its area.

Written source of Swensson's working in Žilina is a supplement in an *Artist-Encyclopaedia from Eisenberg*, L. J./Groner, Richard called „*Das geistige Wien*“ (1892) p. 63

Swensson, Gustav, E. Von den von ihm ausgeführten Parkanlagen sind noch zu erwähnen: Schwarzenbach-Landis in Zürich, die Parkanlagen der Silener Fabriken und von Adolf Böh & Sohn daselbst etc. Währing, Spöttlgasse 2.



MEMORIAL SCULPTURE

The monument will consist of two inseparable parts: **sculptural-architectural work and live trees**. The sculpture itself, approximately 4.6 m high, is inspired by the so-called Gothic Gate in the Súľov Rocks (Slovak: *Súľovské skaly*) and will be located in the southwestern part of the park. The monument is based on the Gothic Gate not only in shape but also in material. The Súľov Rocks massif is geologically formed by the Súľov Conglomerate, which is very similar to a concrete mixture. The green roof on the crown wall of the monument has its species and habitat essence in the rocky vegetation. The so-called green roof as a tool of contemporary landscape architecture is gaining more and more popularity in the design of buildings. In addition to its aesthetic function, it is an element that is perfectly connected with the surrounding landscape and, last but not least, this green infrastructure retains water in the landscape and is a habitat for many species of animals. This creates new habitats in an urban environment. The use of contemporary landscape tools and methods together with classical architectural sculpture creates a precondition for the creation of a modern architectural and artistic work, which fulfills not only aesthetic but also an educational function. The architecture of the monument will be connected with the surrounding landscape by a view of the city's landmarks: the Holy Trinity Cathedral and the Craft House.

The mass of the sculpture will be created as a monolithic casting from a concrete mixture. Alternatively, a metal structure lined with a corresponding stone is also permissible. The sculpture will have its crown wall greened by rocky vegetation (*Sedum sp.*). A portrait of Carl Gustav Swensson, modeled from wire, will be placed on the view wall. The use of this material is directly related to the craft of wirework, which was very widespread in the past around Žilina (villages of Divina, Dlhé Pole, Veľké Rovné). This will combine traditional craftsmanship with modern sculpture and architecture. Below the portrait, a text with basic information will be placed. The already mentioned table with a QR code will be placed on the memorial. The monument will include three pieces of trees – birches in the variety called Dalecarlica (*Betula pendula* 'Dalecarlica', in Swedish **Ornäsbjörk**). This tree was discovered in Sweden in 1767 and has been the Swedish national tree since 1985. These trees should be planted during the unveiling ceremony.

Swensson's bench

At least austere information about the appearance of the original Swensson park can be obtained from the preserved photographs and views of park. One of the interesting elements of small architecture are benches that the architect used in front of the main factory building. One such bench can be made in a replica and can be part of the mobilier in the new Swensson Park.



Swensson benches
in the original park concept

NEW SWENSSON'S PARK LOCATION



LEGEND

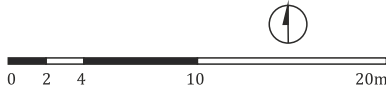
- Carl Gustav Swensson Park – *Park Carla Gustava Swenssona*
- Original Swensson park around the former Cloth Processing Factory realized in 1891
- Torso of the original park preserved to date
- Historical center of Žilina

LEGEND

- park border – solved area
- buildings
- paved areas
- grassy area
- ornamental flower beds
- deciduous trees
- coniferous trees
- bushes
- bus stop
- wiring under the surface
- hot-water pipe
- wiring in the air
- protection zone
- Všivák stream in the pipeline
- ⊗ public lighting
- trash can
- advertising board



CURRENT STATUS



LEGEND

- park border – solved area
- buildings
- paved areas
- grassy area
- ornamental flower beds
- deciduous trees
- coniferous trees
- bushes
- trees to be transplanted
- new tree *Liriodendron tulipifera*
- new tree *Pinus bungeana*
- new tree *Ginkgo biloba* 'Fastigiata'
- new trees *Betula pendula* 'Dalecarlica'
- new bushes *Cornus florida*



GARDENING INTERVENTIONS



LEGEND

- park border – solved area
- buildings
- paved areas
- grassy area
- ornamental flower beds
- original deciduous trees
- original coniferous trees
- original bushes
- new coniferous trees
- new deciduous trees
- new bushes
- new information board
- Carl Gustav Swensson Memorial
- Swensson's bench



ARCHITECTURAL DESIGN OF THE SOLUTION

View of the Cathedral
(the dominant feature of the Žilina)
through the monument



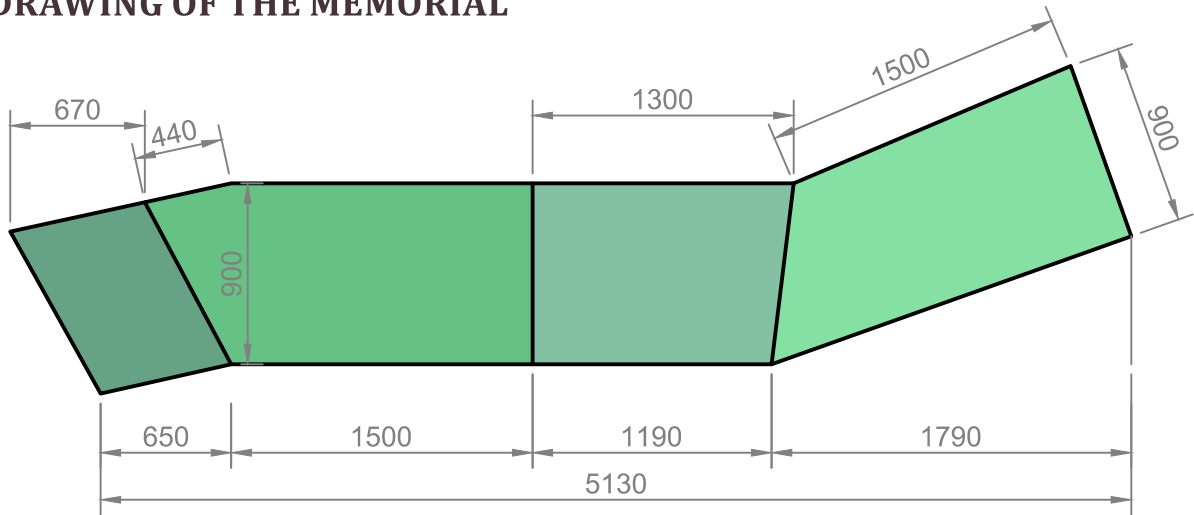


ASSORTMENT OF NEW TREES AND BUSHES

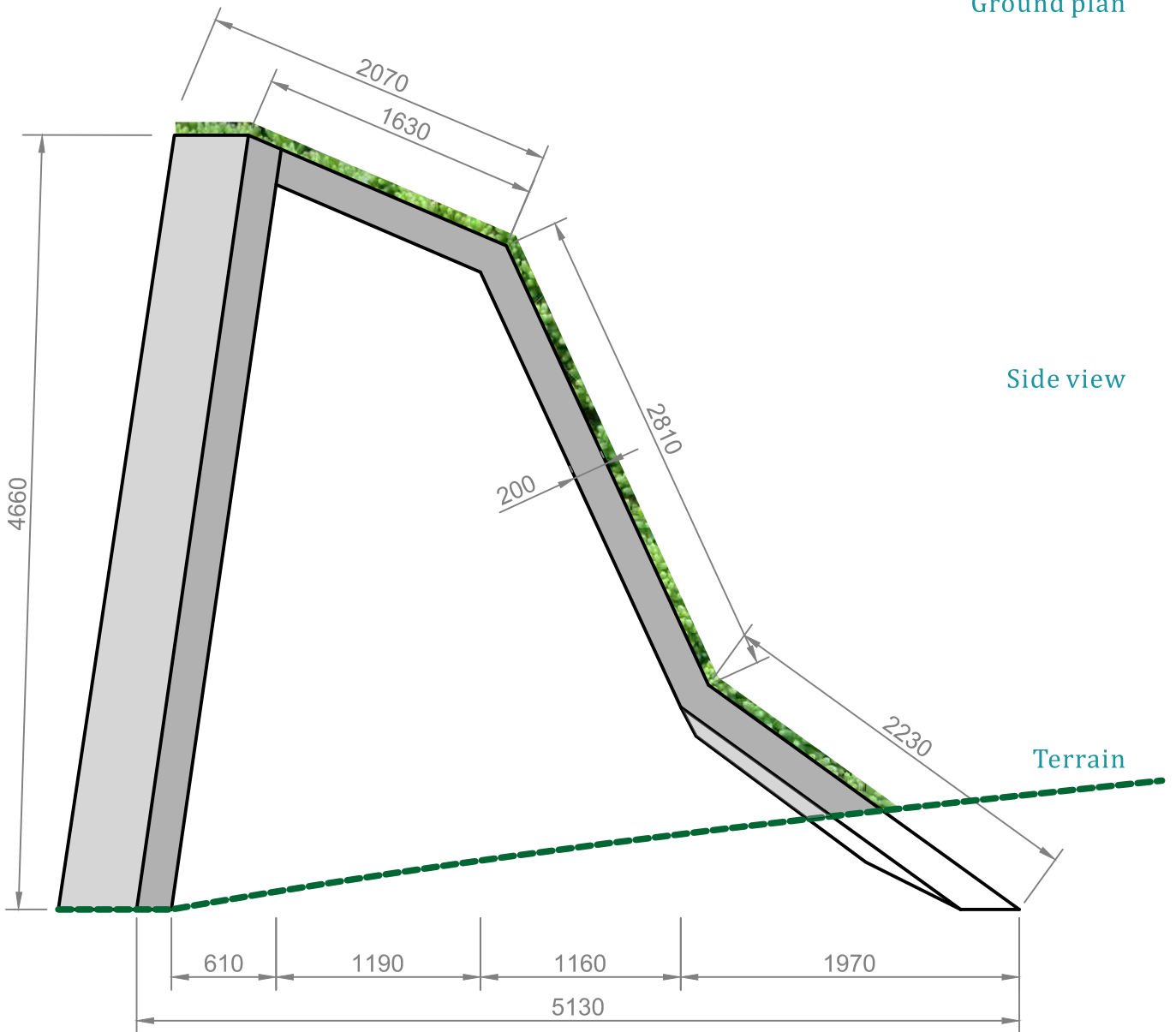




DRAWING OF THE MEMORIAL

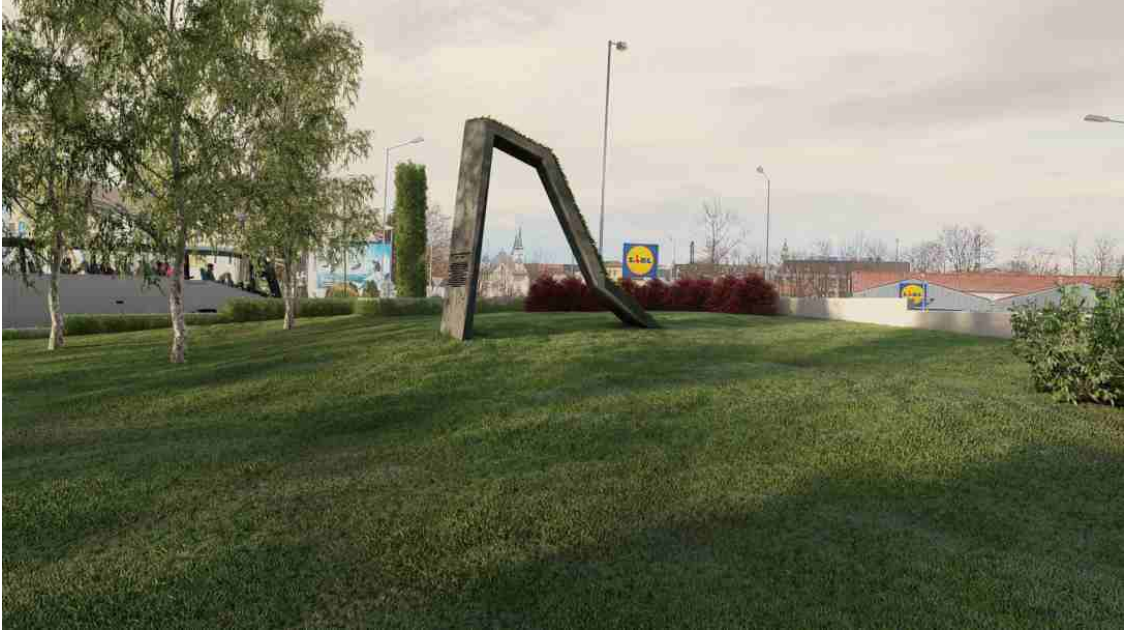


Ground plan



Side view

Terrain



VISUALIZATIONS OF THE MEMORIAL

SWENSSON'S BENCH



Replica according to the original design



Posztógyár.

Original benches in front of the main facade



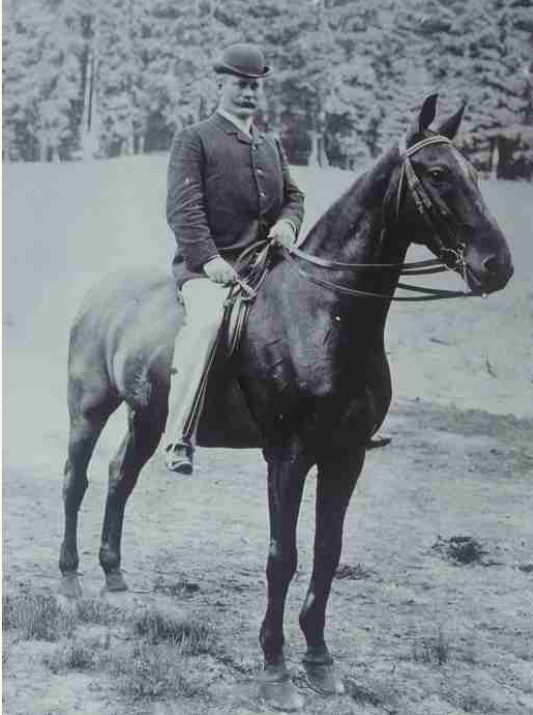
Administration-Gebäude

Original factory project, 1890
(front facade)

Gaßten-Fassade



SWENSSON'S PORTRAIT - METHOD OF WIRE FORMATION



*Zsólna A Vág-völgy. Posztógyár.
Sillein, Das Waagtal. Tuchfabrik.*

Historical view of the factory



Planting a park around the Cloth Processing Factory in Žilina called „Súkenka“





Designed by Marek Sobola
2021



SERVARE et MANERE